

INSTALLATION IMAGE GALLERY AND SALES DATA SHEETS



APPLICABLE LEGISLATION ON ANTI-ELECTROCUTION BIRD PROTECTION.

*CAON-KORWI*® FOR USE ON OVERHEAD ELECTRIC NETWORKS





UTILITY:  
 • ENDESA DISTRIBUCION  
 INSTALLER COMPANY:  
 • ELECNOR S.A. – JAEN



LOCATION:  
 • Mancha Real\_JAEN\_Altitude 759 m  
 TYPE OF APPLICATION \_ ( Image1):  
 • HERRINGBONE TANGENT STRUCTURE, LA-30 CONDUCTOR

DATE AND TIME:  
 • Nov. 2013 – 09.00h to 11.00h  
 WEATHER CONDITIONS:  
 • DRY AND SUNNY\_ +1°C / +4°C



- MATERIALS USED:**
- SWP-12\_ 9 m
  - SPSC\_ 3PC.
  - STAINLESS TIES\_ 12UD.
  - SILICONE TAPE\_ 9m



Image 2: Easy trimming, installation and closing of Mod. SWP-12 conductor cover, even at low temperatures.

Image 3: Secure attachment of SWP-12 cover to the clamp by means of two (2) stainless steel ties.

Image 4: Easy trimming, installation and adaptation of SPSC device to the specific application requirements. Full insulation of Ball joint and Suspension clamp.

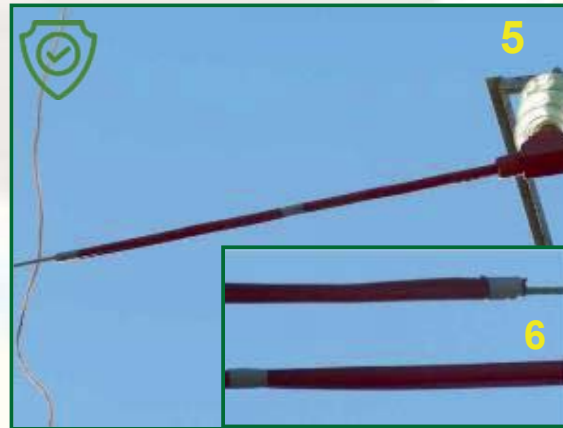


Image 5: Securing cover closure using cold vulcanising silicone tape, Mod. X-TREME by MOCAP®

Image 6: Close-up view of taping on far end of clamp, without covering the SWP cover outlet to allow drainage.



Image 7: Structure elements insulated in accordance with RD-1432/2008\_ BOJA 209.



UTILITY: ENDESA DISTRIBUCION  
CONTRACTOR: ELECNOR S.A.

LOCATION: JAEN\_PERIURBAN AREA Altitude 603 m  
APPLICATION TYPE \_ ( Image.1):

- HERRINGBONE DEADEND/BRANCH TOWER \_ LA-56

DATE AND TIME: Nov. 2013 – 09.00h at 12h  
WEATHER CONDITIONS: DRY AND SUNNY\_ +3°C / +7°C

**MATERIALS USED:**

STSC_9PC.	SWP-12_9 m	SAP_9PC.
STAINLESS TIES_18UD.	SILICONE TAPE_15m	

Image 2: Easy trimming, installation and closing of Mod. SWP-12 conductor cover, even at low temperatures

Trimming is performed working from the structure itself, quickly and to the lengths required by the jumper.



Image 3: Secure attachment of SWP-12 cover to the clamp by means of two (2) stainless steel ties.



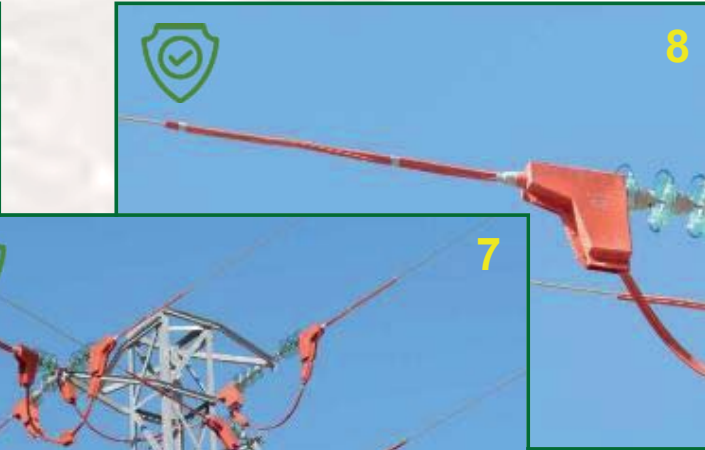
Images 4 & 5: Easy trimming, installation and adaptation of STSC clamp cover to the specific application requirements. Full insulation of Ball joint and Deadend clamp. Interaction with SAP device to cover up existing connectors and splices, even hard-to cover ones due to their proximity to the deadend clamp.

Images 6 & 7: Structure elements insulated in accordance with RD-1432/2008\_BOJA 209.



Image 8: Securing SWP cover closure using cold vulcanising silicone tape, Mod. X-TREME by MOCAP®, showing view of taping on cone – extra safety measure – to prevent slipping of SWP cover along conductor, and view of far end of clamp, without covering the SWP cover outlet to allow drainage.

Image 9: Close-up view of “flush” fit against glass insulator disc.





Mod. STSC (GA-1/GA-2) , used in combination with Mod. SWP-12

LOCATION:  
Ubeda\_PERIURBAN AREA \_Altitude 748 m  
TYPE OF APPLICATION:  
36KV TRANSFORMER STATION\_ LA-56  
DATE AND TIME: Dec. 2014 - 09.00h to 12h  
WEATHER CONDITIONS:  
DRY AND SUNNY\_ +5°C / +7°C



Mod. SPSA: Surge Arrester Cover with conductor entry/exit protected with Mod. SWP.

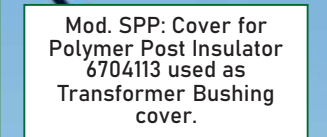
Mod. SWP: Capacity of conductor cover to adapt to small radius curves



Mod. SPSA: Alternative use as cover for ARVI-32.

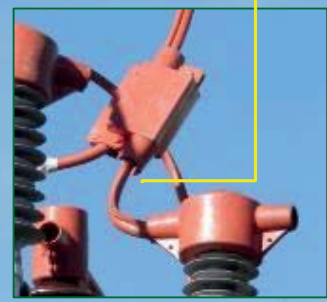


Installation without tools of the various CAON-KORWI Silicone devices. Easy to install working from the tower.



Mod. SPP: Cover for Polymer Post Insulator 6704113 used as Transformer Bushing cover.

Mod. SAP: Cover for AMPACT-GRIMPI. Easily adaptable on site for use on Bypass - shunt line. Used in combination with Mod. SWP.





**LOCATION:**  
 HINOJOSA DEL DUQUE (CORDOBA)  
 PERIURBAN AREA \_ Altitude 545 m.  
**TYPE OF APPLICATION:**  
 LIVE LINE WORK \_ TOWERS WITH ARVI-32 \_ ARVI-42  
 PIN TYPE INSULATORS  
**CONDUCTOR:** LA-56.  
**DATE AND TIME:** November 2016 - 12h.  
**WEATHER CONDITIONS:**  
 DRY\_SUNNY\_ +5°C / +9°C.



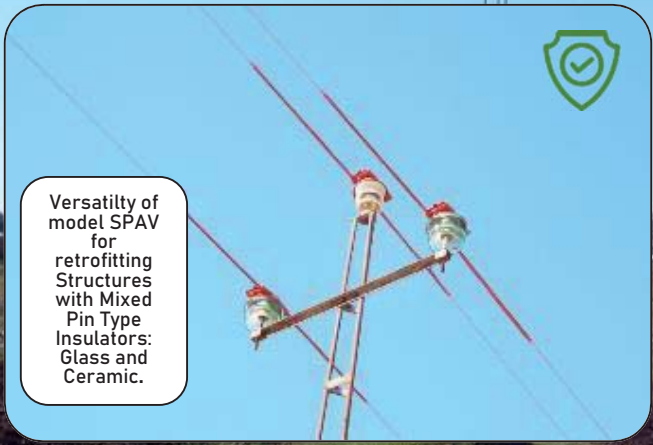
Middle phase ARVI-32 fully covered up with conductor length >1m on either side by means of CAON-KORWI® Silicone covers models SWP - SPAV.



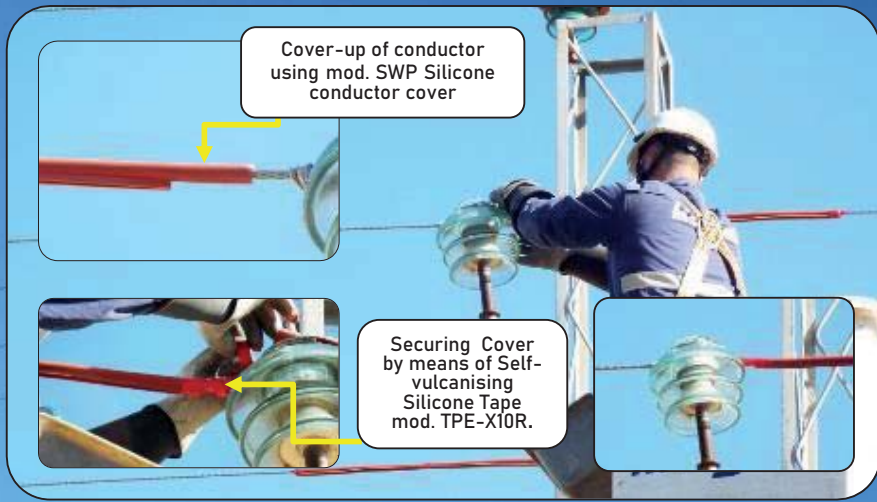
Installation of SPAV Cover on Ceramic Pin Type Insulators.



Installation of mod. SPAV Silicone Cover on ARVI-42 pin type glass insulators



Versatility of model SPAV for retrofitting Structures with Mixed Pin Type Insulators: Glass and Ceramic.



Cover-up of conductor using mod. SWP Silicone conductor cover



Securing Cover by means of Self-vulcanising Silicone Tape mod. TPE-X10R.



Installation of mod. SPAV Silicone Cover on ARVI-42 pin type glass insulators



Close-up view of fit of model SPAV Cover over model ARVI-32 glass pin-type insulator.  
 Fitting onto insulator without tools by means of preinstalled pins.



Installation of the various CAON-KORWI® Silicone Devices without using tools, Easy to adapt working from the Structure.





LOCATION :

CHILE

PERIURBAN AREA

INSTALLATION CONDITIONS :

RIGID INSULATORS TYPE LINE POST PD

CONDUCTOR: ACSR .



AIM:

Solve the continuous service interruptions caused by the electrocution of local fauna.

The SPSF6 protector is a multifunctional device that is designed to cover the live parts present in the terminals of SF6 , OCR \_ NOJA - SIEMENS switches. It can also be used on: Surge Arresters and Substation Bar Support , Disconnector Terminals and Fuse Bases, as well as in ANSI 57-2 and 57-3 insulators - among others.



SWP PROTECTOR



Conductor isolation by using CAON-KORWI@ Silicone Protector model SWP.

The SPAV protector can be used on ARV1-42 and rigid porcelain insulators present in distribution lines until 36kV.

Fixing to the insulator without tools, by means of pre-fitted pins.



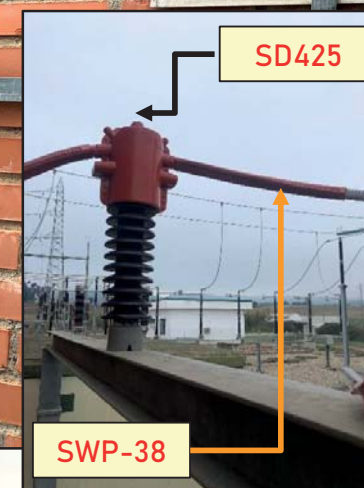
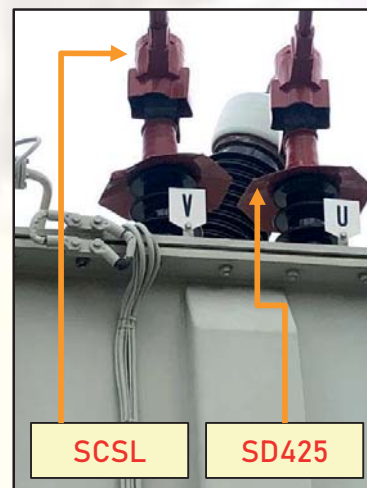
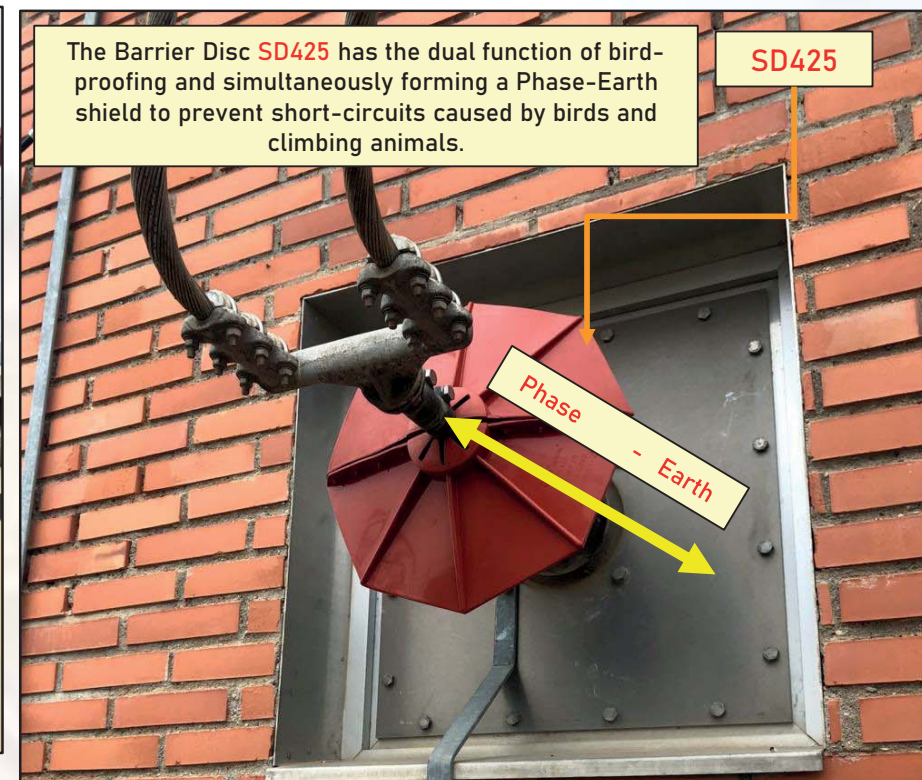
16 jul 2022 14:27:43

WILDLIFE SUSPENSION CLAMPS KIT -GS4

Versatility of use of the CKSP1.4T. KIT on different types of insulators.

16-07-2022 13:29:59







**LOCATION AND DATE:**  
VIETNAM - - APRIL, 2.022.  
Special protection WILDLIFE zone.  
PROGRAMME : PRESERVATION  
APPLICATION: ANTI-ELECTROCUTION suitability for  
lines with DEADEND INSULATORS and BARE  
CONDUCTORS.



**SPP Model:** Protector  
for Rigid Insulator

STSC Model (GA-1/GA-2) , in  
combination with SWP38 Model

Silicone Protector model **SWP.**





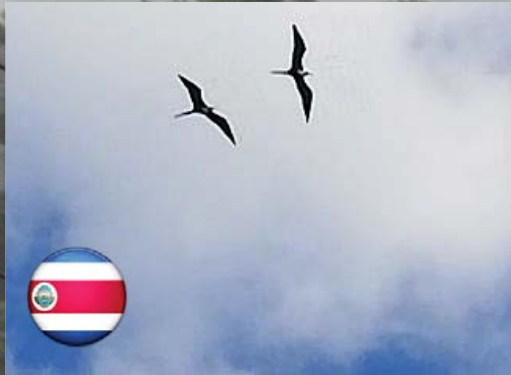
Installations using CAON-KORWI@ Bird Protection Devices  
SPAV - SWP - SPSF6 \_ 36kV

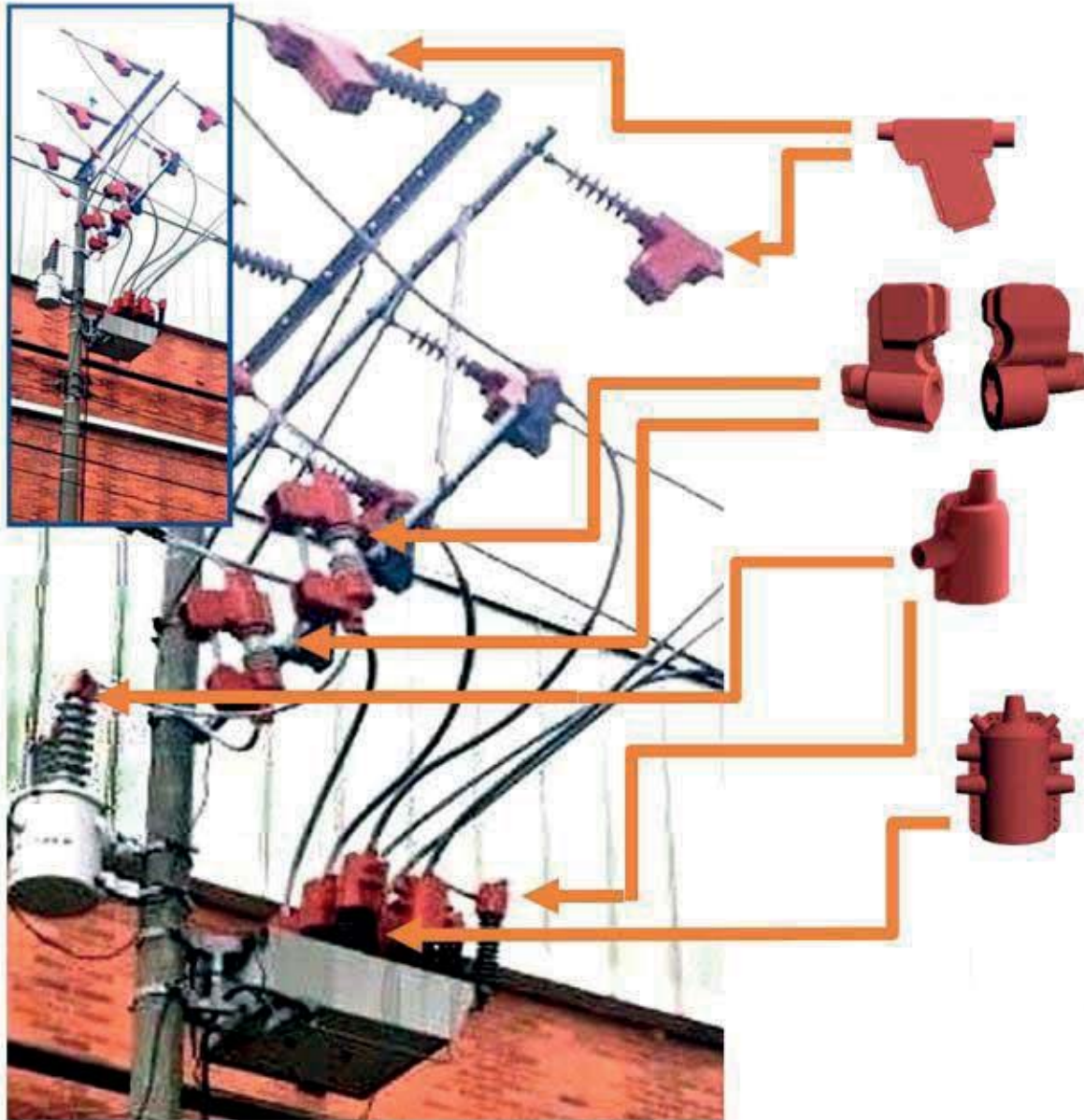
LOCATION AND DATE:

SAN JOSÉ, GUANACASTE and CARTAGO. December 2019.

SCOPE OF APPLICATION:

Retrofitting of ANTI-ELECTROCUTION devices on lines with ANSI 52-3 LINE POST insulators and reclosers.





*Mounts with Silicon anti-fauna  
Protective Covers CAON-KORWI®*

*STSC-13*

COVER FOR USE ON GA-3 DEADEND CLAMPS & COMPRESSION CLAMPS.

*KIT SCUP-SCDW*

COVER FOR USE CUT - OUTS BUSHINGS IN XS LINES

*SPB*

COVER FOR TRANSFORMER BUSHINGS

*SPSF6*

COVER FOR BUSHINGS OCR / SWITCHES SF6  
SUBSTATION TRANSFORMER

